

DEPARTMENT OF THE ARMY TECHNICAL MANUAL

**GENERAL SUPPORT MAINTENANCE REPAIR PARTS AND
SPECIAL TOOLS LISTS (INCLUDING DEPOT MAINTENANCE
REPAIR PARTS AND SPECIAL TOOLS)
TEST SET, SLAVING AMPLIFIER TS-1702/ASN
(FSN 6625-886-5914)**

**Headquarters, Department of the Army, Washington, DC
13 December 1974**

Current as of 2 October 1974

	Paragraph	Page
SECTION I. INTRODUCTION		
Scope	1-1	2
General	1-2	2
Explanation of columns	1-3	2
Special information	1-4	4
Location of repair parts	1-5	4
Abbreviations (Not applicable)	1-6	4
Reporting of equipment publication improvements	1-7	4
II REPAIR PARTS LIST		6
III SPECIAL TOOLS, TEST AND SUPPORT EQUIPMENT (Not applicable)		
IV INDEX — FEDERAL STOCK NUMBER AND REFERENCE NUMBER / CROSS- REFERENCE TO FIGURE AND ITEM NUMBER		9

*This manual supersedes TM 11-6625-506-45P, 27 September 1963.

SECTION I
INTRODUCTION

1-1. Scope

This manual lists repair parts and special tools required for the performance of general support and depot maintenance of the TS-1702 ASN. The PCCN for the TS-1702 ASN is GANACV for all models.

NOTE

No parts authorized for stockage at direct support.

1-2. General

This repair parts and special tools list is divided into the following sections:

a. Repair Parts List - Section II. A list of repair parts authorized for the performance of maintenance at the direct support, general support, and depot level. This repair parts list is arranged in alphabetical order

b. Special Tools, Test and Support Equipment - Section III. Not applicable.

c. Index - Federal Stock Number and Reference Number Cross-Reference to Figure and Item Number - Section IV. A list, in ascending numerical sequence, of all Federal stock numbers appearing in the listings. followed by a list, in alphameric sequence, of all reference numbers appearing in the listings Federal stock number and reference numbers are cross-referenced to each illustration figure and item number or reference designation appearance.

1-3. Explanation of Columns

The following provides an explanation of columns found in the tabular list.

II. Source, Maintenance, and Recoverability Codes (SMR)

(1) Source code. Indicates the manner of acquiring support items for maintenance, repair, or overhaul of end items. Source codes are-

Code	Explanation
P A -	Item procured and stocked for anticipated or known usage.
P B -	Item procured and stocked for insurance purposes because essentiality dictates that a minimum quantity be available in the supply systems.
P C -	Item procured and stacked and which otherwise would be coded PA except that it is deteriorative in nature.
P D -	Support item. excluding support equipment.

4. Code

5. Acquisition

procured for initial issue or outfitting and stocked only for subsequent or additional initial issues or outfittings. Not subject to automatic replenishment.

- P E - Support equipment procured and stocked for initial issue or outfitting to specified maintenance repair activities.
- P F - Support equipment which will not be stocked but which will be centrally procured on demand.
- PG - Item procured and stocked to provide for sustained support for the life of the equipment. It is applied to an item peculiar to the equipment which because of probable discontinuance or shutdown of production facilities would prove uneconomical to reproduce at a later time.
- KD — An item of depot overhaul/repair kit and not purchased separately. Depot kit defined as a kit that provides items required at the time of overhaul or repair.
- KF An item of a maintenance kit and not purchased separately. Maintenance kit defined as a kit that provides an item that can be replaced at organizational or direct support or general support levels of maintenance
- K B - Item included in both a depot overhaul/repair kit and a maintenance kit.
- M O - Item to be manufactured or fabricated at organizational level.
- M F - Item to be manufactured or fabricated at direct support maintenance level.
- M H - Item to be manufactured or fabricated at general support maintenance level.
- M D - Item to be manufactured or fabricated at depot maintenance level.
- A O - Item to be assembled at organizational level.
- A F - Item to be assembled at direct support maintenance level.
- A H - Item to be assembled at general support maintenance level.
- A D - Item to be assembled at depot maintenance level.
- X4 — Item is not procured or stocked because the requirements for the item will result in the replacement of the next higher assembly.

<i>Code</i>	<i>Explanation</i>
XB	Item is not procured or stocked. If not available through salvage, requisition.
XC	Installation drawing, diagram instruction sheet, field service drawing, that is identified by manufacturers' part number.
XD	Support items can be requisitioned with justification.

NOTE

Cannibalization or salvage may be used as a source of supply for any items source coded above except those coded XA and aircraft support items as restricted by AR 700-42.

(2) *Maintenance code.* Maintenance codes are assigned to indicate the levels of maintenance authorized to USE and REPAIR support items. The maintenance codes are entered in the third and fourth positions of the Uniform SMR Code Format as follows:

(a) *Use (third position).* The maintenance code entered in the third position indicates the lowest maintenance level authorized to remove, replace, and use the support item. The maintenance code entered in the third position indicates one of the following levels of maintenance.

<i>Code</i>	<i>Application/Explanation</i>
O	Support item is removed, replaced, used at the organizational level of maintenance.
NOTE	
A code "C" may be used in this position to denote crew or operator maintenance performed within organizational maintenance.	
F	Support item is removed, replaced, used at the direct support maintenance level.
H	Support item is removed, replaced, used at the general support maintenance.
D	Support items that are removed, replaced, used at depot only.

(b) *Repair (fourth position).* The maintenance code entered in the fourth position indicates whether the item is to be repaired and identifies the lowest maintenance level with the capability to perform complete repair (i.e., all authorized maintenance functions). When a maintenance code is not used a dash (-) sign is entered. For multi-service equipment/systems or when a code is entered, this position will contain one of the following maintenance codes as assigned by the service(s) that require the code:

<i>Code</i>	<i>Application/Explanation</i>
O	The lowest maintenance level capable of complete repair of the support item is the organizational level.

<i>Code</i>	<i>Application/Explanation</i>
F	The lowest maintenance level capable of complete repair of the support item is direct support.
H	The lowest maintenance level capable of complete repair of the support item is general support.
D	The lowest maintenance level capable of complete repair of the support item is the depot level.
L	Repair restricted to designated Specialized Repair Activity.
Z	Non-repairable. No repair is authorized.
B	No repair is authorized. The item may be reconditioned by adjusting, lubricating, etc., at the user level. No parts or special tools are procured for the maintenance of this item.

(3) *Recoverability code.* Recoverability codes are assigned to support items to indicate the disposition action on unserviceable items. The recoverability code is entered in the fifth position of the uniform SMR Code Format as follows:

<i>Code</i>	<i>Explanation</i>
Z	Nonrepairable item. When unserviceable, condemn and dispose at the level indicated in the first digit of the maintenance code.
O	Repairable item. When uneconomically repairable, condemn and dispose at organizational level.
F	Repairable Item. When uneconomically repairable, condemn and dispose at the direct support level.
H	Repairable item When uneconomically repairable, condemn and dispose at the general support level.
D	Repairable item. When beyond lower level repair capability, return to depot. Condemnation and disposal not authorized below depot level.
L	Repairable item. Repair, condemnation, and disposal not authorized below depot/Specialized Repair Activity level.
A	Item requires special handling or condemnation procedures because of specific reasons (i.e., precious metal content, high dollar value, critical material or hazardous material).

b. Federal Stock Number. Indicates the Federal stock number assigned to the item.

NOTE

For requisitioning purposes, the Federal stock number must be converted to the National stock number by adding "-00-"

after the Federal stock classification (FSC) code (first four digits). For example, FSN 6625-553-0142 converts to NSN 6625-00-553-0142.

c. *Description.* Indicates the Federal item name and a minimum description required to identify the item. The last line indicates the reference number followed by the applicable Federal Supply Code for Manufacturer (FSCM) in parentheses. The FSCM is used as an element in item identification to designate manufacturer or distributor or Government agency, etc., and is identified in SB 708-42.

d. *Unit of Measure (U.M).* Indicate the standard or basic quantity by which the listed item is used in performing the actual maintenance function. This measure is expressed by a two-character alphabetical abbreviation; e.g., ea. in, pr, etc.. and is the basis used to indicate quantities and allowances in subsequent columns. When the unit of measure differs from the unit of issue, the lowest unit of issue that will satisfy the required units of measure will be requisitioned.

e. Quantity Incorporated in Unit. This column indicates the quantity of the item used in the equipment. Subsequent appearances of the same Item in the same assembly are indicated by the letters "REF".

t 30-Day DS/GS Maintenance Allowances.

NOTE

Allowances in GS column are for GS maintenance only.

(1) The repair parts indicated by asterisk entries in separate allowance columns for DS and GS represent those authorized for use at that category of maintenance to be requisitioned on an "as required" basis, until stockage is based on demand in accordance with AR 710-2.

(2) Allowance quantities are indicated in the special tool lists section for special tools, TMDE, and other support equipment.

g. 1-Year Allowances Per 100 Equipments/Contingency Planning Purposes. Column intentionally left blank.

h. Depot Maintenance Allowance Per 100 Equipments. This column indicates opposite the first appearance of each item the total quantity authorized for depot maintenance of 100 equipments.

i. Illustration. This column is divide as follows:

(1) Figure number. Indicates the figure number of the illustration on which the item is shown in TM 11-689.

(2) Item number. Indicates the item number or reference designation used to reference the item in the illustration.

1-4. Special Information

a. Usable on codes are included in column 3. Uncoded items are applicable to all models. Identification of the usable on codes used in this publication are —

<i>Code</i> A80	<i>Used on</i> TS-1702/ASN
---------------------------	--------------------------------------

b. The following publication pertains to the TS-1702/ASN and its components:

TM 11-6625-506-34 Field Maintenance Manual:
Test Set, Slaving Amplifier
TS-1702/ASN.

1-5. Location of Repair Parts

a. This manual contains one cross-reference index (sec IV) to be used to locate a repair part when either the Federal stock number or reference number (manufacturer's part number) is known. The first column in the index is prepared in numerical or alphanumeric sequence in ascending order. The reference numbers (manufacturer's part numbers) are listed immediately following the last listed Federal stock number in the index of Federal stock numbers.

b. When the Federal stock number or reference number is known, follow the procedures given in (1) and (2) below.

(1) Refer to the index of Federal stock numbers (sec IV) and locate the Federal stock number or reference number. The FSN and reference number are cross-referenced to the applicable figure and item number or reference designation.

(2) Refer to the repair parts list (sec II) and locate the figure number (col 10a) and item number or reference designation (col 10b) as noted in the FSN index.

c. When the figure and item number or reference designation are known, scrutinize columns 10a and 10b) of the repair parts list (sec II) until the item is located.

d. When the FSN, reference number, figure number, item number and reference designation are not known, scrutinize column 3 of the repair parts list (sec II), which is arranged in alphabetical order.

1-6. Abbreviations

Not applicable.

1-7. Reporting of Equipment Publication Improvements

The reporting of errors, omissions, and recommendations for improving this publication by the individual user is encouraged. Reports should be submitted on DA Form 2028 (Recommended Changes to Publica-

tions and Blank Forms) and forwarded direct to
Commander US Army Electronics Command,

ATTN: AMSEL-MA-SR, Fort Monmouth, N.J.,
07703.

(1) SMR CODE	(2) FEDERAL STOCK NUMBER	(3) DESCRIPTION REFERENCE NUMBER & MFR CODE USA3LE ON CODE	(4) UNIT OF MEAS	(5) QTY INC IN UNIT	(6) 30 DAY DS MAINT ALLOWANCE			(7) 30-DAY GS MAINT ALLOWANCE			(8) 1 YR ALW PER 100 EQUIP CNTGCY	(9) DEPOT MAINT ALW PER 100 EQUIP	(10) ILLUSTRATION	
					(a)	(b)	(c)	(a)	(b)	(c)			(a)	(b)
					1-20	21-50	51-100	1-20	21-50	51-100			FIGURE NO	ITEM NO
XDHPD		AMMETER M1 PANEL TYPE, 100-0-100..... SCALE, 1250 OHMS, SERIES RESISTANCE, 3.5 IN FACE DIA X 2.8 IN BODY DIA X 2.89 IN LG 992558-01 (35351)	EA	1				*	*	*			2	M1
XDZZZ		CAPACITOR, FIXED, ELECTROLYTIC C1..... TANTALUM TYPE, 1 SECT, 25 UF P20PCT M15PCT, 50 VDCM VP25B50A1 (21520)	EA	1				*	*	*			3	C1
XDZZZ		CAPACITOR, FIXED, MICA DIELECTRIC C2 1 SECT, 40,000 UUF PORM2PCT, 600 VDCM 1445RB (00656)	EA	2				*	*	*			3	C2
XDZZZ		CAPACITOR, FIXED, MICA DIELECTRIC C3 1 SECT, 40,000 UUF PORM2PCT, 600 VDCM 1445RB (00656)	EA	REF				*	*	*			3	C3
PAHZZ	5935-581-5594	CONNECTOR, RECEPTACLE, ELECTRICAL J401... 14 CNT 1109-09-00 (35351)	EA	1				*	*	*		3	1	J401
PACZZ	5920-281-0205	FUSE, CARTRIDGE F1..... MS90070-19 (81349)	EA	3				*	*	*		50	3	F1
PACZZ	5920-281-0205	FUSE, CARTRIDGE F2..... MS90070-19 (81349)	EA	REF				*	*	*			3	F2
PACZZ	5920-281-0205	FUSE, CARTRIDGE F3..... MS90070-19 (81349)	EA	REF				*	*	*			3	F3
PAHZZ	5920-892-9311	FUSEHOLDER #F1 EXTRACTOR, POST TYPE, 15 AMPS, 250 V, 2.281 IN LG X 0.719 IN DIA FHH2661 (81349)	EA	3				*	*	*		3	3	AF4
PAHZZ	5920-892-9311	FUSEHOLDER #F2 EXTRACTOR, POST TYPE, 15 AMPS, 250 V, 2.281 IN LG X 0.719 IN DIA FHH2661 (81349)	EA	REF				*	*	*			3	AF4
PAHZZ	5920-892-9311	FUSEHOLDER #F3 EXTRACTOR, POST TYPE, 15 AMPS, 250 V, 2.281 IN LG X 0.719 IN DIA FHH2661 (81349)	EA	REF				*	*	*			3	AF3
PAHZZ	5935-577-2336	JACK, TIP E1 NUTLUM, BLK	EA	1				*	*	*		8	4	E1
PAHZZ	5935-603-7651	JACK, TIP E2 NUTLUM, RED	EA	1				*	*	*		8	4	E2
ADZZZ		WALNUT NUT-REF-06506 1/4-1/8 IN DIA X 3/4 IN H X 1/4 IN DIA HOLE	EA	1				*	*	*				
ADZZZ		WALNUT NUT-REF-06506 1/4-1/8 IN DIA X 3/4 IN H X 1/4 IN DIA HOLE	EA	2				*	*	*				
PAGZZ	6240-004-0644	LAMP, 40W 0.65 AMP 6.3V 1/4 IN DIA X 1/4 IN H X 1/4 IN DIA HOLE	EA	1				*	*	*		100	6	008
ADZZZ		LAMP, 40W 0.65 AMP 6.3V 1/4 IN DIA X 1/4 IN H X 1/4 IN DIA HOLE	EA	1				*	*	*				
PAHZZ	5935-581-5594	CONNECTOR, RECEPTACLE, ELECTRICAL J401... 14 CNT 1109-09-00 (35351)	EA	1				*	*	*				
PAHZZ	5935-581-5594	CONNECTOR, RECEPTACLE, ELECTRICAL J401... 14 CNT 1109-09-00 (35351)	EA	REF				*	*	*				

SECTION II

(1) SMR CODE	(2) FEDERAL STOCK NUMBER	(3) DESCRIPTION REFERENCE NUMBER & MFR CODE USABLE ON CODE		(4) UNIT OF MEAS	(5) QTY INC IN UNIT	(6) 30-DAY DS MAINT ALLOWANCE			(7) 30-DAY GS MAINT ALLOWANCE			(8) (9) 1 YR DEPOT ALW PER MAINT 100 ALW PER EQUIP 100 CNTG CY EQUIP		(10) ILLUSTRATION FIGURE NO ITEM NO	
						(a)	(b)	(c)	(a)	(b)	(c)	ALW PER EQUIP	ALW PER EQUIP	(a)	(b)
						1-20	21-50	51-100	1-20	21-50	51-100				
XDHZZ		RESISTOR, FIXED, FILM	R2.....	EA	1				*	*	*			3	R2
VHZZ		RESISTOR, FIXED, FILM	R3.....	EA	1				*	*	*			3	R3
PAHZZ	5905-504-5799	RESISTOR, FIXED, FILM	R4.....	EA	3				*	*	*			3	R4
PAHZZ	5905-504-5799	RESISTOR, FIXED, FILM	R5.....	EA	REF				*	*	*			3	R5
PAHZZ	5905-504-5799	RESISTOR, FIXED, FILM	R6.....	EA	REF				*	*	*			3	R6
PAHZZ	5905-581-4980	RESISTOR, FIXED, FILM	R7.....	EA	1				*	*	*			3	R7
VDHZZ		RESISTOR, FIXED, FILM	R8.....	EA	2				*	*	*			3	R8
QHZZ		RESISTOR, FIXED, FILM	R9.....	EA	REF				*	*	*			3	R9
PHZZ		RESISTOR, FIXED, FILM	R10.....	EA	2				*	*	*			3	R10
PHZZ		RESISTOR, FIXED, FILM	R11.....	EA	REF				*	*	*			3	R11
PAHZZ	5905-556-5004	RESISTOR, FIXED, FILM	R14.....	EA	1				*	*	*			3	R14
PAHZZ	5905-552-3245	RESISTOR, FIXED, FILM	R19.....	EA	1				*	*	*			3	R19
PAHZZ	5905-577-0890	RESISTOR, FIXED, FILM	R20.....	EA	2				*	*	*			3	R20
PAHZZ	5905-577-0890	RESISTOR, FIXED, FILM	R21.....	EA	REF				*	*	*			3	R21
PAHZZ	5906-556-3783	RESISTOR, FIXED, FILM	R22.....	EA	2				*	*	*			3	R22
PAHZZ	5906-566-3783	RESISTOR, FIXED, FILM	R24.....	EA	REF				*	*	*			3	R24
PAHZZ	5906-566-6004	RESISTOR, FIXED, WIRE WOUND	R16 1/2 WND	EA	2				*	*	*			3	R16
PAHZZ	5906-566-6004	RESISTOR, FIXED, WIRE WOUND	R16 1/4 WND	EA	REF				*	*	*			3	R16
PAHZZ	5905-566-6004	RESISTOR, FIXED, WIRE WOUND	R17 1/2 WND	EA	REF				*	*	*			3	R17
PHZZ		RESISTOR, FIXED, WIRE WOUND	R17 1/4 WND	EA	2				*	*	*			3	R17
PAHZZ	5905-566-6004	RESISTOR, FIXED, WIRE WOUND	R18 1/2 WND	EA	REF				*	*	*			3	R18
PHZZ		RESISTOR, FIXED, WIRE WOUND	R18 1/4 WND	EA	2				*	*	*			3	R18
PAHZZ	5905-566-6004	RESISTOR, FIXED, WIRE WOUND	R19 1/2 WND	EA	REF				*	*	*			3	R19
PHZZ		RESISTOR, FIXED, WIRE WOUND	R19 1/4 WND	EA	2				*	*	*			3	R19
PAHZZ	5905-566-6004	RESISTOR, FIXED, WIRE WOUND	R20 1/2 WND	EA	REF				*	*	*			3	R20
PHZZ		RESISTOR, FIXED, WIRE WOUND	R20 1/4 WND	EA	2				*	*	*			3	R20
PAHZZ	5905-566-6004	RESISTOR, FIXED, WIRE WOUND	R21 1/2 WND	EA	REF				*	*	*			3	R21
PHZZ		RESISTOR, FIXED, WIRE WOUND	R21 1/4 WND	EA	2				*	*	*			3	R21
PAHZZ	5905-566-6004	RESISTOR, FIXED, WIRE WOUND	R22 1/2 WND	EA	REF				*	*	*			3	R22
PHZZ		RESISTOR, FIXED, WIRE WOUND	R22 1/4 WND	EA	2				*	*	*			3	R22
PAHZZ	5905-566-6004	RESISTOR, FIXED, WIRE WOUND	R23 1/2 WND	EA	REF				*	*	*			3	R23
PHZZ		RESISTOR, FIXED, WIRE WOUND	R23 1/4 WND	EA	2				*	*	*			3	R23
PAHZZ	5905-566-6004	RESISTOR, FIXED, WIRE WOUND	R24 1/2 WND	EA	REF				*	*	*			3	R24
PHZZ		RESISTOR, FIXED, WIRE WOUND	R24 1/4 WND	EA	2				*	*	*			3	R24

(1) SMR CODE	(2) FEDERAL STOCK NUMBER	(3) DESCRIPTION REFERENCE NUMBER & MFR CODE USABLE ON CODE	(4) UNIT OF MEAS	(5) QTY INC IN UNIT	(6) 30-DAY DS MAINT ALLOWANCE			(7) 30-DAY GS MAINT ALLOWANCE			(8) 1 YR ALW PER 100 EQUIP CNTGCV	(9) DEPOT ALW PER 100 EQUIP	(10) ILLUSTRATION	
					(a)	(b)	(c)	(a)	(b)	(c)			(a)	(b)
					1 20	21 50	51 100	1 20	21 50	51 100			FIGURE NO	ITE NO
CONTINUED														
PAHZZ	5961-785-3219	GERMANIUM LN93A (81349) SEMICONDUCTOR, DEVICE, DIODE	CR2.....	EA	REF				*	*	*		3	CR2
PAHZZ	5961-785-3219	GERMANIUM LN93A (81349) SEMICONDUCTOR, DEVICE, DIODE	CR3.....	EA	REF				*	*	*		3	CR3
PAHZZ	5961-785-3219	GERMANIUM LN93A (81349) SEMICONDUCTOR, DEVICE, DIODE	CR4.....	EA	REF				*	*	*		3	CR4
YDHZZ		GERMANIUM LN93A (81349) SHAFT, SHOULDERED NO-REF-DESIG PLASTIC..		EA	1				*	*	*			
YDHZZ		2 3/16 IN LG X 3/8 IN OD 990861-01 (135351) SWITCH, ROTARY 51 7 SECT, 10 POS, 30..		EA	1				*	*	*		2	SA
PAHZZ	5930-259-9423	992100-01 (135351) SWITCH, TOGGLE 52 4 POLE, SINGLE.....		EA	1				*	*	*		3	SA
YDHZZ		206-0054-00 (13499) SWITCH, TOGGLE 53 4 POLE, DOUBLE.....		EA	1				*	*	*		2	SA
YDHZZ		206564 (121493) TRANSFORMER, POWER, STEP-DOWN	T4.....	EA	1				*	*	*		2	TA
PAHZZ	5950-578-1126	991011-01 (135351) TRANSFORMER, POWER, STEP-DOWN	T3.....	EA	1				*	*	*		2	TA
PAHZZ	5950-678-1126	991701-01 (135351) TRANSFORMER, POWER, STEP-DOWN	T2.....	EA	1				*	*	*		2	TA
PAHZZ	5950-908-0000	990701-01 (135351) TRANSFORMER VARIABLE POWER	T1.....	EA	1				*	*	*		2	TA
PAHZZ	6065-412-0011	994101-01 (135351) VOLTAGE REG. NO AC		EA	1				*	*	*		2	TA
		990701-01 (135351) VOLTAGE REG. NO AC		EA	1				*	*	*		2	TA

INDEX - FEDERAL STOCK NUMBER AND REFERENCE NUMBER
CROSS-REFERENCE TO FIGURE AND ITEM NUMBER

STOCK NUMBER	FIGURE NO.	ITEM NO.	STOCK NUMBER	FIGURE NO.	ITEM NO.
5905-504-5759	3	R4	5920-281-0205	3	F1
5905-504-5799	3	R5	5920-281-0205	3	F2
5905-504-5795	3	R6	5920-281-0205	3	F3
5905-552-3245		R19	5920-892-9311	3	XF1
			5920-892-9311	3	XF2
			5920-892-9311	3	XF3
			5930-259-9423	3	S2
5905-556-3783	3	R22	5935-501-5594	1	J401
5905-556-3783	3	R24	5935-577-2336	2	E1
5905-556-5004	3	R14	5935-683-7651	2	E2
5905-556-5004	3	R16	5950-557-6988	2	T1
5905-556-5004	3	R17	5950-578-1124	2	T2
5905-577-0890	3	R20	5950-578-1124	2	T3
5905-577-0890	3	R21			
5905-581-4980	3	R7	5961-785-3219	3	CR1
			5961-785-3219	3	CR2
			5961-785-3219	3	CR3
			5961-785-3219	3	CR4
5905-723-3996	3	R12			
5905-723-3996	3	R1			
5905-752-7319	2	R13	6240-682-3411	3	DS1
			6625-825-6113	2	M2

REFERENCE NO.	MFR CODE	FIG. NO.	ITEM NO.	REFERENCE NO.	MFR CODE	FIG. NO.	ITEM NO.
2-61864	00159	2	E2	RN75812R1F	81349	3	R17
M27105-2	12697	2	R18	RN7581501F	81349	3	R1
HN26G1	81349	3	XF1	RN7581501F	81349	3	R12
HN26G1	81349	3	XF2	RS2A20HMSFORM1	91637	3	R15
HN26G1	81349	3	XF3	SM0491382	80063	3	DS1
S16108-3A	96906	2	E1	VP25850A1	21520	3	C1
S90078-19	81349	3	F1	026-3106-3	16902	2	M2
S90078-19	81349	3	F2	1N93A	81349	3	CR1
S90078-19	81349	3	F3	1N93A	81349	3	CR2
A20LASB150A	81349	2	R13	1N93A	81349	3	CR3
N7081131F	81349	3	R2	1N93A	81349	3	CR4
N7081400F	81349	3	R3	1105-05-08	35351	1	J401
N7081741F	81349	3	R7	132-4084-997	72019	3	YDS1
N7081980F	81349	3	K1J	1445R8	00050	3	C2
N7081960F	81349	3	R11	1445R8	00050	3	C3
N7083012F	81349	3	R22	20114	83330		
N7083012F	81349	3	R24	20118	83330		
N7084991F	81349	3	R20	266-0054-00	13499	3	S2
N7084991F	81349	3	R21	7665K4	27193	2	S3
N7084993F	81349	3	R6	975P	44025	2	R23
N7084993F	81349	3	R5	990790-01	35351	2	T3
N708493F	81349	3	R6	990791-01	35351	2	T2
N7086489F	81349	3	R8	990861-01	35351	2	S1
N7086489F	81349	3	R9	992100-01	35351	2	T1
N7089091F	81349	3	R19	992412-02	35351	2	T1
N7581281F	81349	3	R14	992558-010	35351	2	M1
N7581281F	81349	3	R16	992881-01	35351	2	T4

By Order of the Secretary of the Army.

FRED C. WEYAND
General, United States Army
Chief of Staff

Official:

VERNE L. BOWERS
Major General, United States Army
The Adjutant General

Distribution:

To be distributed in accordance with DA Form 12-36, (qty rqr block no, 452) Direct and General Support requirements for MA-1.

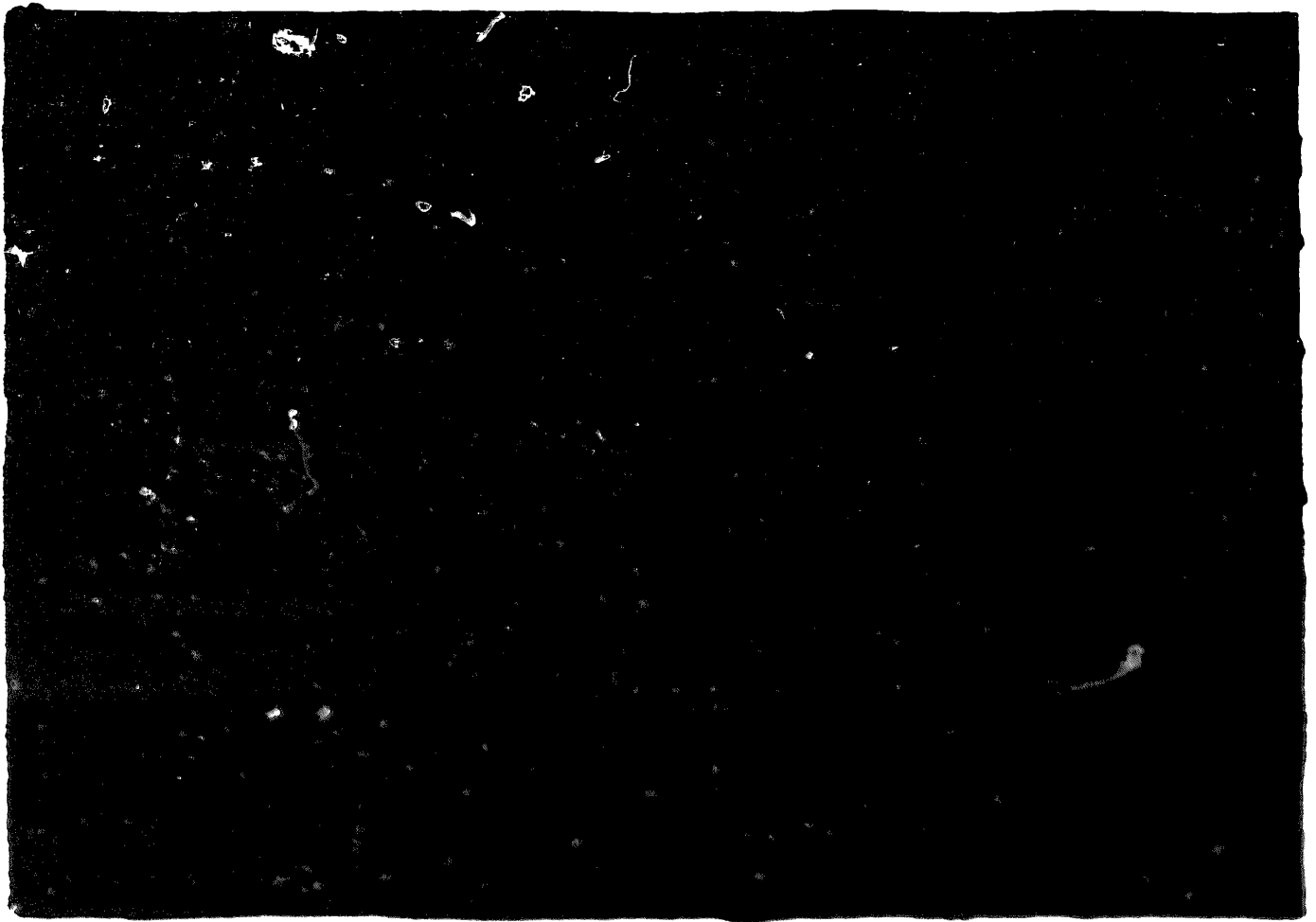
* U S. GOVERNMENT PRINTING OFFICE 1974-665136/385

END

01-03-83

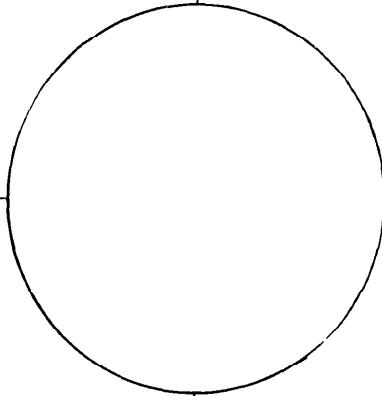
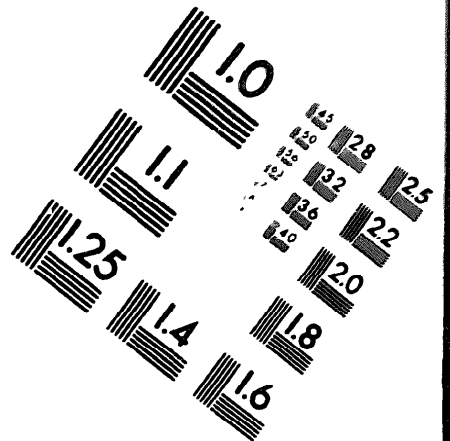
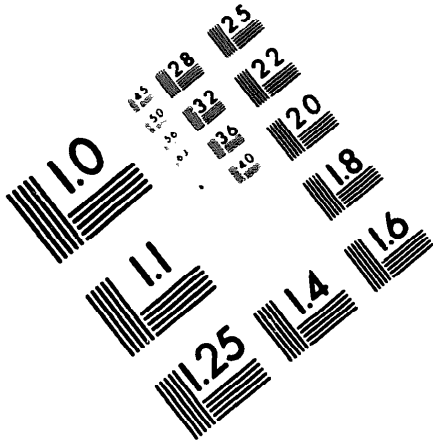
DATE





DEPARTMENT OF THE ARMY

MICROFORM TEST TARGET



150 MM

10 mm e= 81 mm

ABCDEFGHIJKLMN OPQRSTUVWXYZ 1234567890
abcdefghijklmnopqrstuvwxyz \$%&' /%# 1/2 1/4 3/4 — = + x & @ *

1.5 mm (e= 1.09 mm)

ABCDEFGHIJKLMN OPQRSTUVWXYZ 1234567890
abcdefghijklmnopqrstuvwxyz \$%&' /%# 1/2 1/4 3/4 — = + x & @ *

2.0 mm (e= 1.37 mm)

ABCDEFGHIJKLMN OPQRSTUVWXYZ
abcdefghijklmnopqrstuvwxyz
1234567890 \$%&' /%# 1/2 1/4 3/4 — = + x & @ *

2.5 mm (e= 1.77 mm)

ABCDEFGHIJKLMN OPQRSTUVWXYZ
abcdefghijklmnopqrstuvwxyz
1234567890 \$%&' /%# 1/2 1/4 3/4 — = + x & @ *

10 mm e= 81 mm

ABCDEFGHIJKLMN OPQRSTUVWXYZ 1234567890
abcdefghijklmnopqrstuvwxyz \$%&' /%# 1/2 1/4 3/4 — = + x & @ *

1.5 mm (e= 1.09 mm)

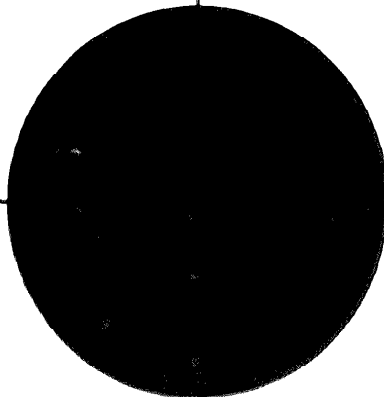
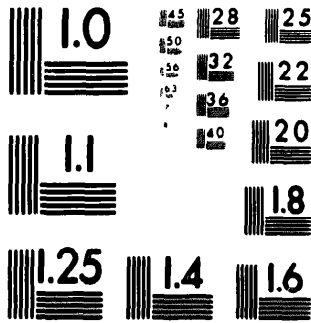
ABCDEFGHIJKLMN OPQRSTUVWXYZ 1234567890
abcdefghijklmnopqrstuvwxyz \$%&' /%# 1/2 1/4 3/4 — = + x & @ *

2.0 mm (e= 1.37 mm)

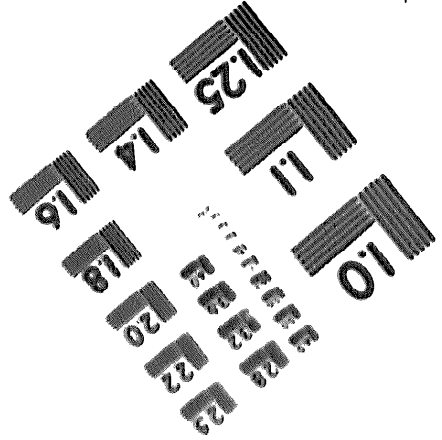
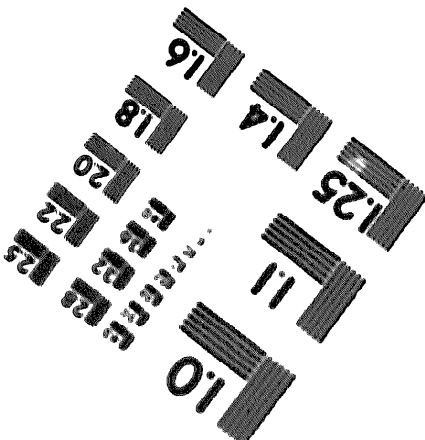
ABCDEFGHIJKLMN OPQRSTUVWXYZ
abcdefghijklmnopqrstuvwxyz
1234567890 \$%&' /%# 1/2 1/4 3/4 — = + x & @ *

2.5 mm (e= 1.77 mm)

ABCDEFGHIJKLMN OPQRSTUVWXYZ
abcdefghijklmnopqrstuvwxyz
1234567890 \$%&' /%# 1/2 1/4 3/4 — = + x & @ *



200 MM



250 MM